

North Star Wall- Route: "Ursa Minor"



A prominent north facing knoll sits about 150m in elevation, 15 min from the lower chek campground.

FA. Jay Robinson, Tess Egan and Kye Egan-Robinson. This route has a slight alpine feel. It is possible to rap from the first four pitches but **NOT** encouraged. Pitches can be linked but anchors are set up so you can maintain contact with the second. Descent takes you along a short very scenic semi exposed ridge back to the campground in 15 min.

North facing views while on the route and once at true summit you will be rewarded with south facing views. After pitch 5 follow flagging tape to the final scramble pitch to summit descend the summits south side and follow flagging tape back to campground (15min). You will pass by a very large boulder (Electric Shock) that has many sent lines.

Shade all morning, sun reaches its top pitches by late noon.

Approach: Just past the lower chek campground parking, 40m down the campground road, watch for trail on the right side before the boulders. (see picture below) Follow trail past a large over grown crag follow flagging tape past bench, continue until you cross a little wet land, walk straight across the boulder field (follow flagging tape and rock cairns) on the other side of boulder field you will enter a young forest (north), go down for a few minutes until you reach the base. (10Min0



Ursa Minor

Pitch1 – 5.7(move), 9 bolts, 30m

Pitch2- 5.8, 5 bolts, 15m

Pitch3- 5.9, 6 bolts, 15m

Pitch4 – 5.6, 6 bolts, 15m

Pitch 5 – 5.4, 7 bolts, 30m

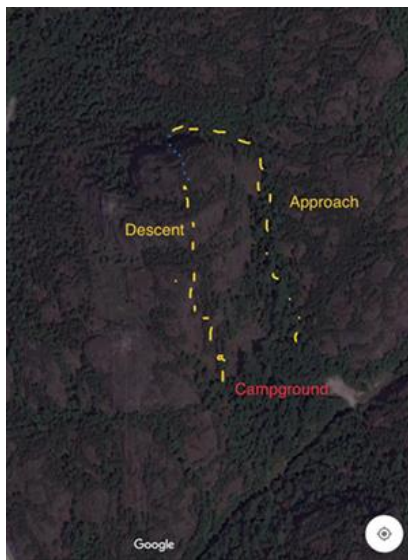
Trail at top of pitch 5 to pitch 6 follow flagging right from anchor, heading South through small wooded section to base of pitch 6.

Pitch6- low 5th class, 3 bolts, 10 m

Head right to reach summit and views. Descend following flagging tape down south side

Descent: pick up rough descent trail on the South side of summit (flagged) head down little gully to fixed rope for a short section, dip down and then back up to gain ridge, continuing heading South. Follow ridge back into the forest and past a large boulder (Electric Shock boulder) following flagging tape back into campground, trail will exit on the far west side next to the furthest campsite. (15min)

Thanks to the Sea to Sky Bolt fund for the hardware required for this route.



ROCK CLIMBING IS INHERENTLY A HAZARDOUS SPORT. ANY ROUTE INFORMATION CONTAINED IN THIS topo IS SUBJECT TO CHANGE DUE TO THE NATURE OF THE ROCK. USE THIS INFORMATION AT YOUR OWN RISK AND DO NOT RELY ON IT FOR YOUR OWN SAFETY. NO WARRANTIES, EXPRESS, IMPLIED OR OF ANY KIND ARE INTENDED IN THIS WORK.

